



# company **PROFILE**

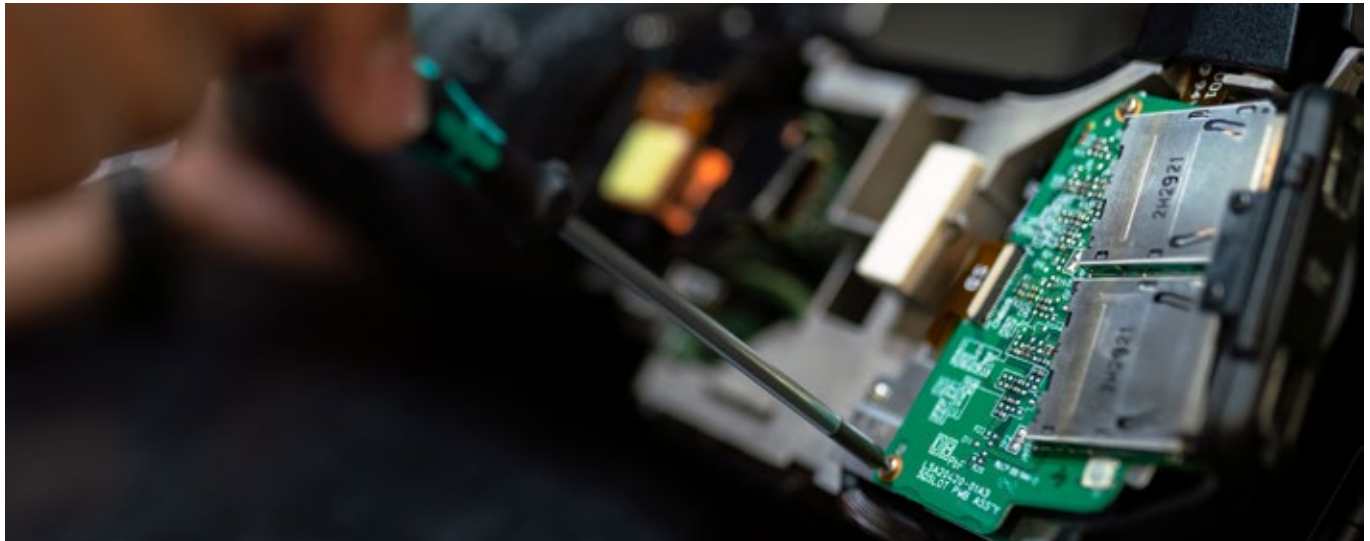
***NETHiX***  
WE CONTROL

# company PROFILE



**From the year 2000 we develop and manufacture complete solutions for the remote access, monitoring and control.**

We are a young and dynamic team of engineers and professionals, specialized in the engineering and in the Hardware, Firmware and Software development of embedded systems. Finding the right solution for every customer, and reducing the effect of the distance between the plant and its supervisor, it's for us the most important challenge and our greatest accomplishment.



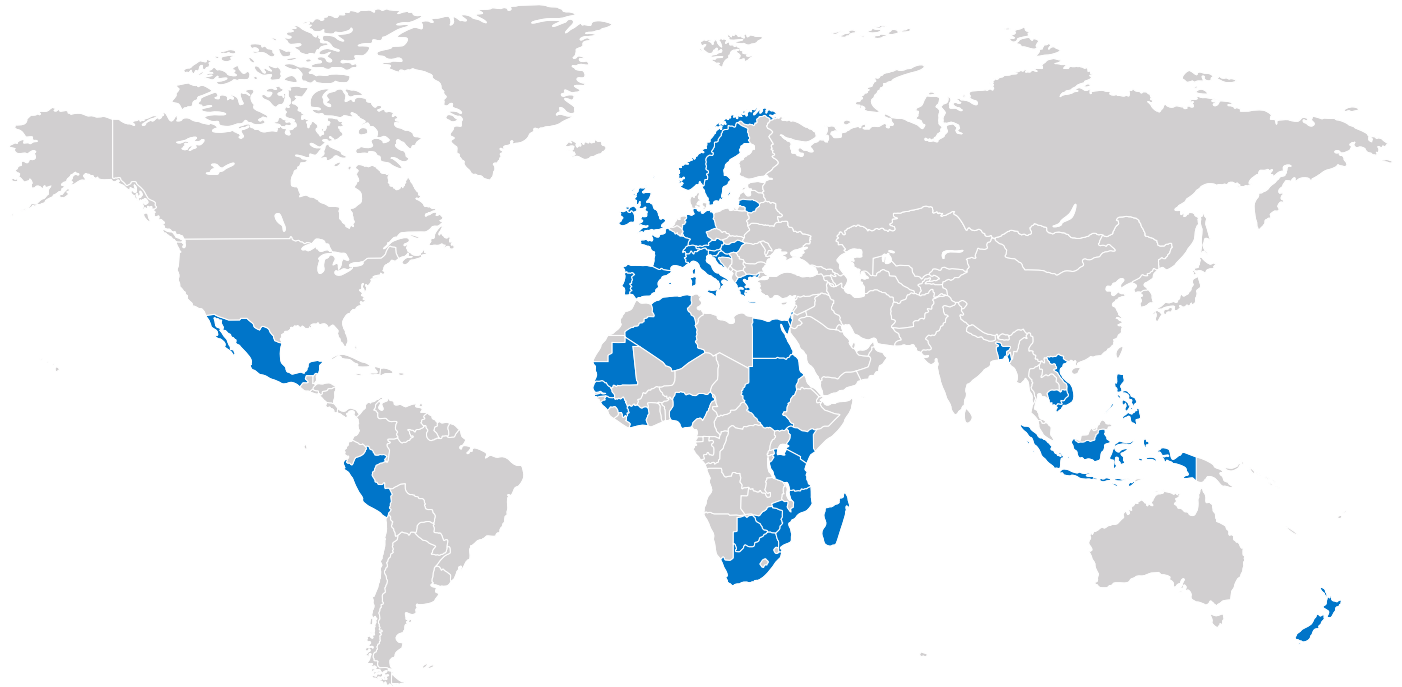
## 100% MADE IN ITALY

**We design and manufacture entirely inside our Italian factory, in order to grant our customers the highest quality level and a first-class technical support.**

Thanks to our long term experience we can offer a wide range of off-the-shelf products and plug-and-play solutions. Nevertheless we can be a first-class technological partner for the development of custom products and new solutions with a reduced time-to-market.

### THE ADVANTAGES OF CHOOSING NETHIX SOLUTIONS

- Highest satisfaction of customers thanks to reliable and easy-to-use products.
- Considerable reduction of maintenance costs.
- Increase of the performance and lifetime of the plants through a predictive diagnostic.



## NETHIX WORLDWIDE

### Our installations

Thanks to the highest quality and reliability, our products are successfully being deployed all over the world since over 20 years.

# our PRODUCTS



**Reliability, usability and flexibility. Complete and versatile solutions, developed to shorten the distance between the machine and its supervisor.**

Nethix offers a high-class range of products, able to fulfill the ever changing requirements of the market, and grants high compatibility, supporting several communication protocols. High-performance solutions that make the communication man-to-machine simpler and more efficient.

we111 we112 we113 we114 

### THE COMPACT AND PROGRAMMABLE IoT MODULES

WE111-WE112-WE113-WE114 acquire signals from the field and deliver them to an external platform; they set and manage alarms and/or actions based on preconfigured events. Through the integrated Web Interface it's easy to configure the system functions according to each specific application.

#### MAIN FUNCTIONS

- Monitoring and control of Input/Output
- Integrated Web server
- Scheduler
- Remote upgrade of software
- Backup/restore of configuration
- Alarms via SMS/EMAIL/CHAT
- Commands via SMS/EMAIL/CHAT
- Real-time graphs
- Plug-in supported
- On-Demand VPN

#### DATA DELIVERY

- Nethix Cloud
- Email report
- Chat
- HTTP/HTTPS
- MQTT/MQTTS

#### APPLICATIONS

- Smart system
- Lighting
- Water networks monitoring
- Access control
- Smart agriculture
- Weather monitoring
- Vending machine





# we151<sup>LTE</sup>

# we152<sup>Wi-Fi</sup>

## IIoT MODULES WITH EXPANDABLE AND PROGRAMMABLE I/O

WE151 and WE152 are the ideal solution for small installations. The compact dimensions and the I/O on board allow an advanced management of the acquired parameters through the integrated Web Interface. The supported Modbus protocol makes the integration with other devices of the plant easier.

### MAIN FUNCTIONS

- Monitoring and control of Input/Output
- Integrated Web server
- Scheduler
- Remote upgrade of software
- Backup/restore of configuration
- Alarms via SMS/EMAIL/CHAT
- Commands via SMS/EMAIL/CHAT
- Real-time graphs
- Plug-in supported
- VPN
- Modbus RTU

### DATA DELIVERY

- Nethix Cloud
- Email report
- Chat
- HTTP/HTTPS
- MQTT/MQTTS
- FTP/FTPS

### APPLICATIONS

- Smart systems
- Pump stations remote control
- Silos monitoring
- Water leak detection
- Water quality control
- Water lifting system
- Weather monitoring
- Meter reading



# we500+

## IIoT GATEWAY with EXPANDABLE AND PROGRAMMABLE I/O

WE500+ is an end-to-end professional solution designed for industrial applications, that collects in one single platform all the most important connectivity functions allowing a complete and automated remote management of any plant.

Beside the I/O already available on board, the system can be expanded through Modbus Protocol.



### MAIN FUNCTIONS

- Input/Output monitoring and control
- Modbus Client RTU/TCP
- Modbus Server RTU/TCP
- Built-in Web Server
- Scheduler
- Datalogger
- Remote software upgrade
- Configuration backup/restore
- Multi-level users and groups
- Advanced events management
- Alarms via SMS/Email/Chat
- Commands via SMS/Email/Chat
- Real-time graphs
- Plug-ins support
- IPcam support
- VPN

### DATA DELIVERY

- Nethix Cloud
- Email report
- Chat
- HTTP/HTTPS
- MQTT/MQTTS
- FTP/FTPS
- Dropbox

### APPLICATIONS

- Water and gas
- Energy and environment
- Industrial automation
- Predictive maintenance
- Remote access to PLC/HMI/PC
- Building automation
- Broadcast and telecom





# we200+

## INDUSTRIAL ROUTER

WE200+ is an efficient and reliable 4G industrial router, that allows the remote access to any device, machine or plant over serial interface, Ethernet, USB or optical fiber.

It's the perfect solution for the remote configuration and maintenance of any machine.

WE200+ is compatible with all devices having serial ports RS232/RS485 and USB, independently from the used protocol.

Thanks to the integrated web interface, WE200+ is easy to configure and to use and doesn't require any particular preparation or training.



# we120

## SMS/GSM REMOTE CONTROL SOLUTION

WE120 is a robust, compact and reliable solution for the remote control and monitoring of small industrial or domotic installations, based on SMS.

It allows to control in real time the system status of machines or devices and to interact via SMS through simple commands as: switch on, switch off or set.

WE120 is expandable and configurable from Windows, Mac OS and Linux.



# DEEPLUG

## BATTERY POWERED REMOTE MONITORING SYSTEM IP68

DeepLog is a battery powered datalogger, specifically designed for the monitoring of water networks and unattended plants. In order to preserve the battery life, DeepLog remains in energy saving status and periodically wakes up according to the preconfigured intervals of time, defined by the user. Once activated, DeepLog reads the parameters collected by the wired sensors. All collected data are then saved locally and forwarded to the platform Deeplog Cloud (or to any third platform).

- Remote upgrade without on-site interventions
- Easy configuration via Bluetooth
- Quick and easy battery change

## DEEPLUG PORTAL

Deeplog Portal offers a tailor-made solution for the management of the delivered data without installing and configuring any additional Software.

Through any browser it's possible to access from any device (PC, tablet and smartphone) to your account, using a dedicated and easy-to-use interface.

Once logged in, it's possible to visualize the data coming from one or more Deeplogs in tabs or charts, and export them in the desired format.



# *ups***500**    *ups***150**

## SWITCH MODE POWER SUPPLY UNITS

UPS500 and UPS150 are switch mode power supply units with backup battery pack, specifically designed and developed for all Nethix's remote monitoring and control devices.

The first one has been developed as a complementary product OF WE500+, while the second is designed to be integrated with WE151 and WE152.

Through the two available outputs, they can detect network outages or low battery power and send a notification to the connected devices that, in turn, will inform one or more users and power-off the devices safely, avoiding uncontrolled switch-offs.

PS110, PS150 and PS300 are also available to complete the range.



# *xp***500**    *xp***150**    *xp***100**

## EXPANSIONS

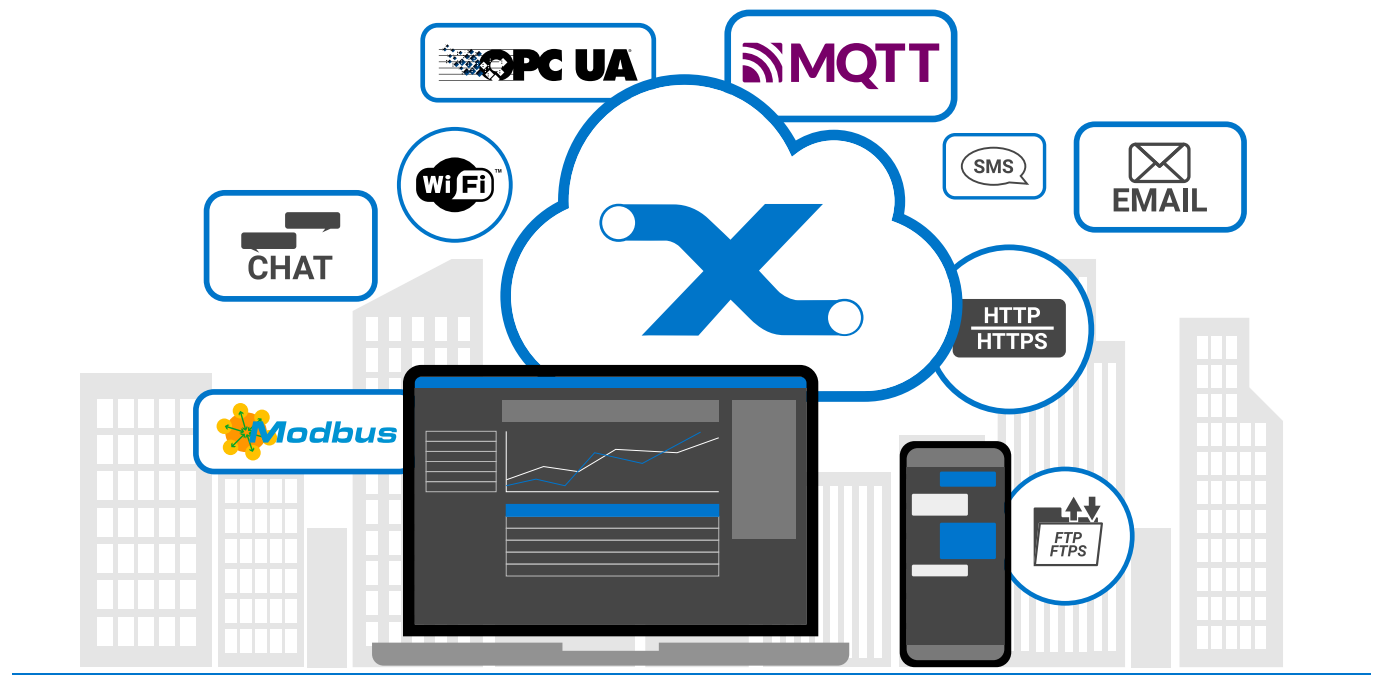
Some applications may require a higher number of I/O than those already available on board of the RTU. For such cases it's possible to add digital or analogue outputs/inputs using the expanders of the XP500 family (suitable for WE500+), XP150 (WE151, WE152) and XP100 (WE120).

These additional modules are easy to install and to configure through a guided procedure.

The XP500, XP150 and XP100 expanders communicate with the device through Modbus RTU Protocol on RS485, while the XP500ETH modules use Modbus TCP on Ethernet.

It's also allowed to connect several expanders to one single RTU.

# services and FEATURES



Nethix Echo-system includes a high number of services and features, that combined and integrated with the devices can grant a highly customizable and enjoyable “user experience”.

All this allows an easy, quick and reliable collection, management and visualization of the data, granting a tailor-made configuration and communication through several modalities and protocols.

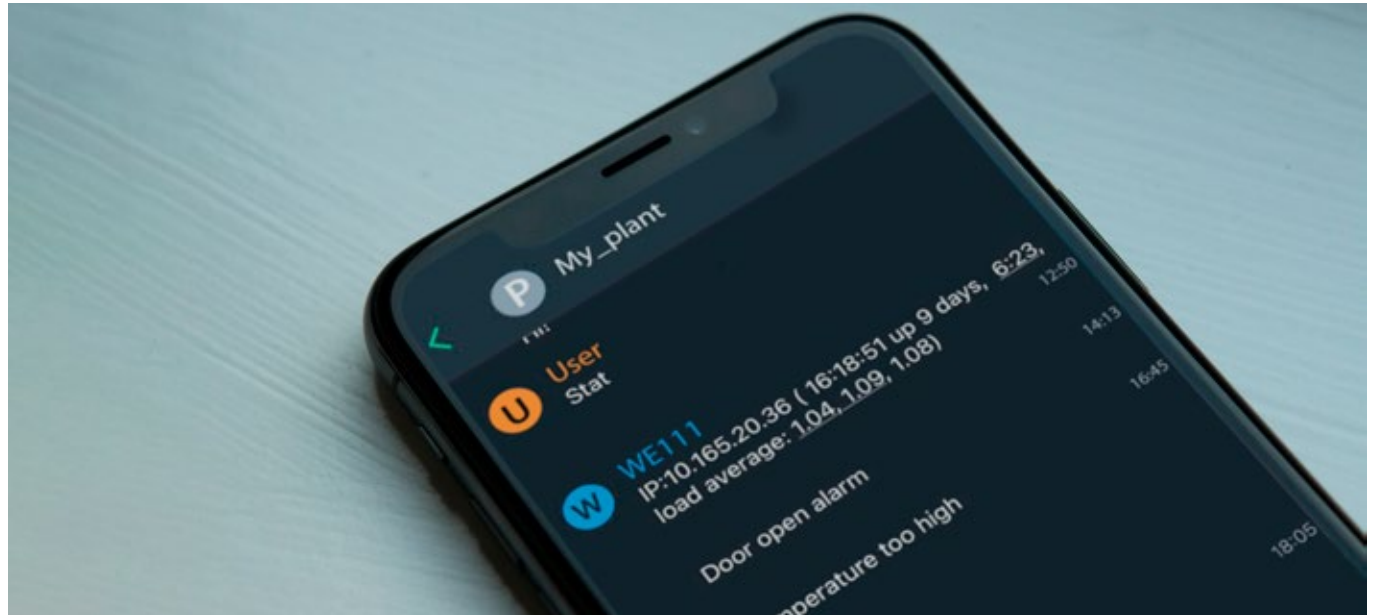


## WEB SERVER

The integrated Web Server of the device can be reached remotely and allows the device configuration. Through any browser, without using any additional Software, it's possible to enter the device and set thresholds, monitor the system status in real time and change some operational parameters and setpoints.

## DASHBOARD

The integrated Web Server offers also the use of a Dashboard: a tool that allows to graphically display on dynamic charts and multi-trace graphs the parameters acquired from the field, and rapidly visualize through widgets the alarm signals.



## MQTT

The Next Family devices support the use of the MQTT/MQTTS Protocol: this allows to expand considerably the number of managed signals and to connect two or more devices with each other. Being completely configurable, this Protocol is compatible with any broker of the customer or of any third party.

## CHAT

Using an instant messaging system it's possible to communicate with the devices, sending commands or receiving alarms notifications in real time.



Nethix srl  
Via dei Pini, 21  
31033 Castelfranco Veneto (TV) - ITALY  
Tel +39 0423 770750  
[www.nethix.com](http://www.nethix.com)